



**THOMAS JEFFERSON AND AARON BURR
PEOPLE, PLACES AND POLITICS**

Introduction



- | | |
|--------------------------------------|--|
| 1. Sunken Lawn | 8. Jefferson's House |
| 2. Wing of Offices | 9. Northwest Grove of Tulip Poplar Trees |
| 3. West Privy | 10. Carriage turn around |
| 4. European Mulberry Trees | 11. Distant Mountains |
| 5. Eastern Mound of trees and shrubs | 12. Western Mound of trees and shrubs |
| 6. Planted borders on South Lawn | 13. Northwest oval bed and tree clump |
| 7. East Privy | 14. 540 yard circular drive |

On this artist's rendition of Jefferson's Poplar Forest, use the numbers to label the following elements of his villa retreat home.

Label the area where you think Jefferson was growing wheat and tobacco.

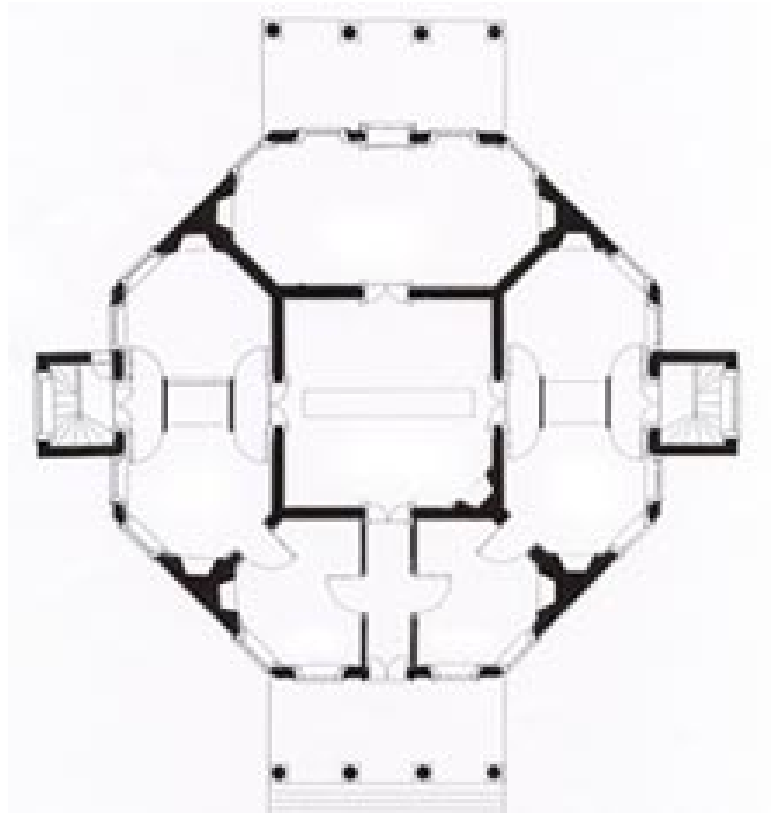
Label the area where you think Jefferson's vegetable garden might have been.



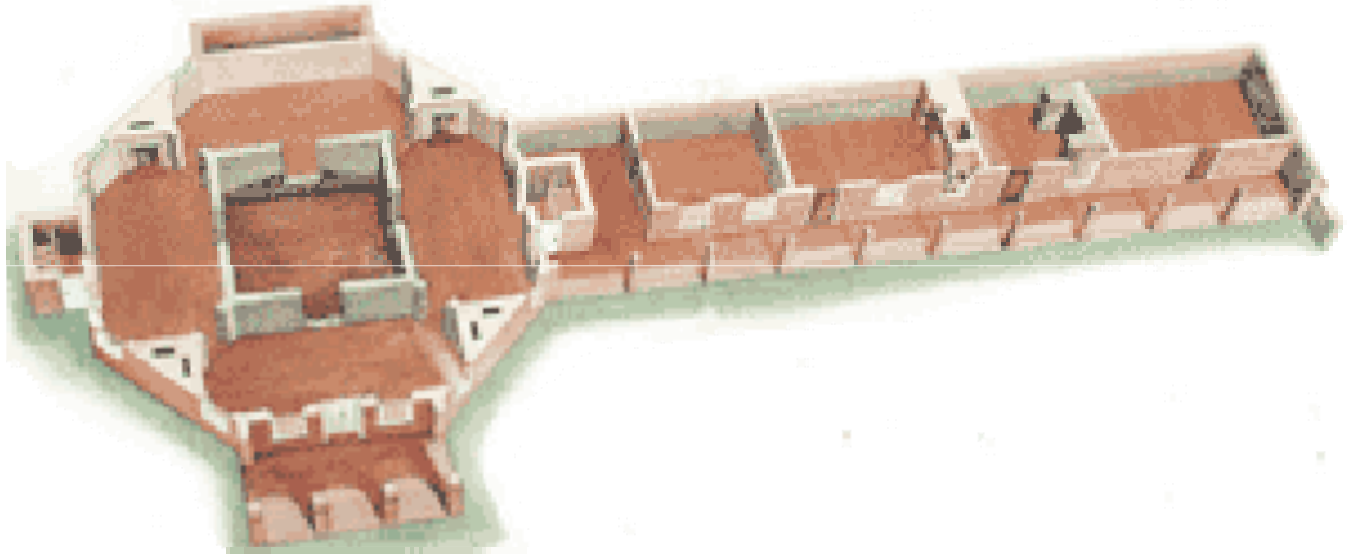
What shape is the Jefferson house? What are the advantages of having this shape house? What are the disadvantages of having this shape house?

Are there other such shaped houses? Based on your research, list these houses and their locations in a chart.

Examine Jefferson's floor plan of the upper level of the house. How would you use the rooms? Label the plan at right with your answers.



Examine the floor plan of the lower level of the house. The cube room on this level is a cellar built below grade to maintain a cool temperature. Jefferson would have stored items that needed to be kept cold. At this time we do not know how Jefferson used the other rooms. What would you use them for? Label the image at left with your answers.



Jefferson added the Wing of Offices in 1814. Examine the Floor Plan of the Lower Level and the attached Wing of Offices to see if you can determine what these rooms were used for? Label the image above with your answers.

Using the biographies of [Thomas Jefferson](#) and [Aaron Burr](#), create a timeline for each man of the most important events of his life. Compare the timelines you created and see if and when their lives crossed paths.